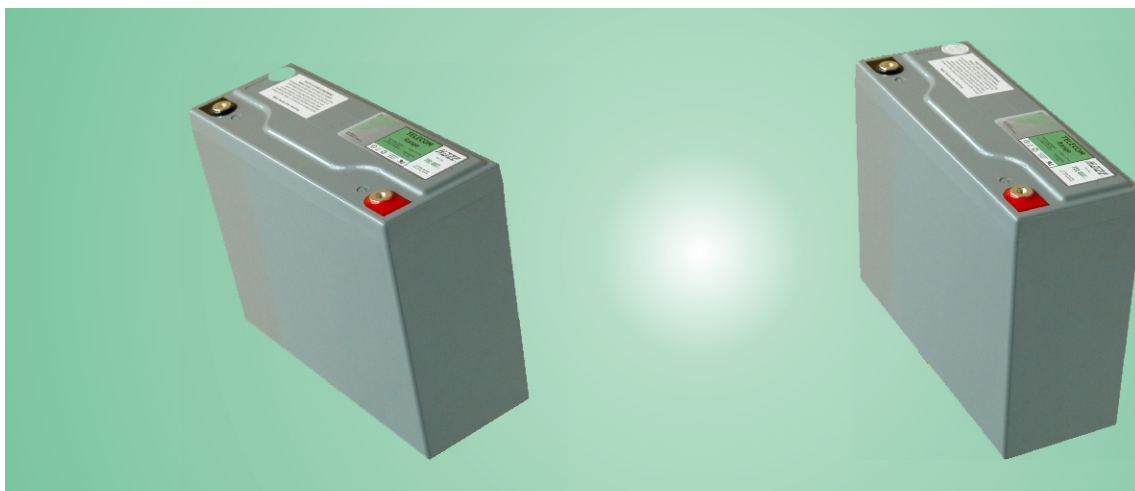


TELECOM RANGE



Haze Battery Company



Model No. TEL 40T (12 Volts, 35.4 Ah at 8 hour Rate to 1.75 vpc)
Valve Regulated Lead Acid Battery for communications
standby power applications

Innovative Features

- ♦ Completely maintenance free, sealed construction eliminates the need for watering
- ♦ Fully tank formed plates
- ♦ Analytical Grade electrolyte
- ♦ Spill proof / leak proof
- ♦ Valve regulated Max internal pressure 2.5 psi
- ♦ Multi-position usage
- ♦ ABS Case & Cover Flame Retardant meets UL 94 VO requirements
- ♦ Low self discharge
- ♦ FAA and IATA approved as non-hazardous
- ♦ Designed to comply with Bellcore TR-NWT-000766, Bellcore TR-NWT-000909, ANSI T1.330-1997, Telcordia SR 4228, British Standard BS 6290 Part 4, IEC 896 Part 2, Eurobat, DIN 43534
- ♦ UL Recognized, ISO 9001

Ampere Hour Capacity at 77°F (25°C) to 1.75 vpc

| Discharge Time in Hrs | 15 mins | 30 mins | 1 hr | 2 hrs | 4 hrs | 8 hrs | 10 hrs | 20 hrs |
|-----------------------|---------|---------|------|-------|-------|-------|--------|--------|
| Ampere Hour Capacity | 18.5 | 22.9 | 27.4 | 31.3 | 33.9 | 35.4 | 35.4 | 37.5 |

Website: www.hazebattery.com/usa
E mail : customerservice@hazebattery.com
Ph: 952-746-7528 Fax: 952-746-7527



AGM Range

Sealed Lead Acid 12 Volt Bloc

Specifications

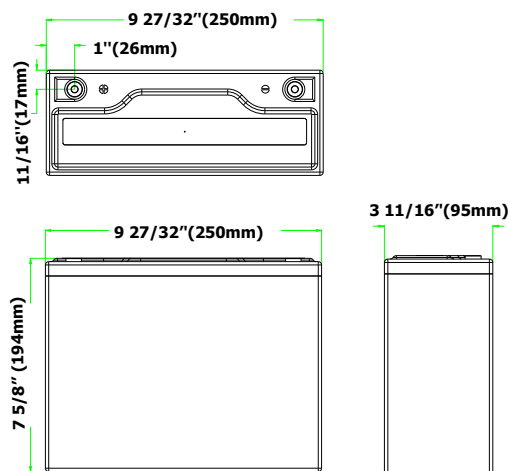
| Nominal Voltage | | 12V | |
|------------------|---------------------------------|-------------|---------|
| Nominal Capacity | | 37.5 Ah | |
| Dimensions | Total Height (Inc terminals) | 7.64 inches | 194 mm |
| | Length | n/a | n/a |
| | Width | 9.84 inches | 250 mm |
| | Weight | 3.68 inches | 93.5 mm |
| | | 29.39 lbs | 13.3 Kg |



Haze Battery Company Ltd

Characteristics

| | | |
|--|---------------------------------|-----------------------------|
| Capacity 77°F (25°C) to 1.75 vpc | 20 hour rate | 37.5 Ah |
| | 10 hour rate | 35.4 Ah |
| | 4 hour rate | 33.9 Ah |
| | 1 hour rate | 27.4 Ah |
| | 15 min rate | 18.5 Ah |
| | Internal Resistance | 7 mOhms |
| Capacity correction for temperature Variations (C20) | 104°F (40°C) | 102% |
| | 68°F (20°C) | 100% |
| | 32°F (0°C) | 85% |
| | 5°F (-15°C) | 65% |
| Self Discharge 77°F (25°C) | Capacity after 1 month storage | 98% |
| | Capacity after 3 months storage | 94% |
| | Capacity after 6 months storage | 86% |
| Short Circuit Current 77°F (25°C) | 1300 | |
| Terminal | Standard | 14mm Insert M6 thread |
| Charging (Constant Voltage) | Float | 2.27 - 2.30 vpc (59 - 77°F) |



End V per Constant Amps Discharge - Amps at 77°F (25°C)

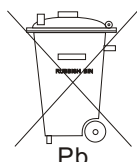
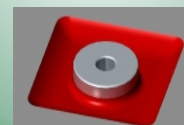
| Cell | 15 mins | 30 mins | 1 hr | 2 hrs | 4 hrs | 8 hrs | 10 hrs | 20 hrs |
|------|---------|---------|-------|-------|-------|-------|--------|--------|
| 1.85 | 67.70 | 42.60 | 25.80 | 15.10 | 8.13 | 4.23 | 3.42 | 1.78 |
| 1.80 | 72.00 | 44.60 | 26.80 | 15.40 | 8.34 | 4.33 | 3.51 | 1.83 |
| 1.75 | 74.10 | 45.80 | 27.40 | 15.70 | 8.47 | 4.42 | 3.58 | 1.88 |

Specifications

| | |
|-----------------------|--|
| Design Life | 12 Years |
| Operating Temperature | -4 °F to 122 °F |
| Grid alloy | Calcium / Tin lead alloy |
| Plates | Flat Pasted |
| Separator | Absorbant Glass Mat |
| Active material | Very high purity lead |
| Charge Voltage | Float 2.25 - 2.30 VPC @77 °F Cycling 2.35 @77 °F Max. 2.4 VPC Max ripple 0.05C (A) |
| Electrolyte | Sulphuric acid Analytical grade purity |
| Venting Valve | EPDM Rubber 1.5 to 2 psi (10.5 - 14 KPa) release pressure. Resealing at 1 psi (7 KPa) |
| Torque setting | The recommended torque value for all types is 44-62 inch-pounds |

Terminal Details

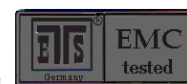
Insert are made from brass with copper, nickel and silver plating giving excellent mechanical, electrical and corrosion resistant properties.



Haze Battery Company keenly encourages environmental awareness; PLEASE follow guidelines for the recycling / disposal of lead.



UL Recognised
Component
MH 20947



Ver. 06/01/10