

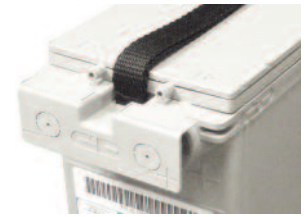


C&D TRUE FRONT ACCESS®

TEL Series Float Service



TEL12-170F



TEL12-170FG
with TFA gas collection system



Typical Wireline Application



Typical Wireless Application

BENEFITS:

- Long Life Float Service Design
 - Confirmed via 3rd party Certification
 - Premium alloy and material components
- True Front Access Design
 - True direct connect terminal for reliability
 - C&D Ohmic Ring® for accurate testing
 - Optional True Front Access gas collection system
 - Connection versatility
- Maximum Performance
 - Superior output due to direct terminal connection
 - Low internal resistance
- Compliant to major global specifications
 - British Standard BS 6290: Part 4: 1997
 - IEC 60896-21/22
 - Telcordia SR-4228
 - Eurobat Guide Classification: Long Life
 - Bellcore GR-63-CORE & GR-1089-CORE
 - UL94 V-0FR
 - Non-Hazardous, not restricted for any transportation mode (air, water or land)

SPECIFICATIONS

Battery	Voltage Per Unit	Ampere Hour Capacity 8 Hour Rate @ 77°F (25°C) to 1.75 v/c	Ampere Hour Capacity 10 Hour Rate @ 68°F (20°C) to 1.80 v/c	Maximum Discharge Current	Short Circuit Current	Ohms Impedance 60 Hz (Ω)	Battery Weight
TEL12-170F/FG	12 V	169 Ah	164 Ah	800 Amperes	4505 Amperes	0.0033 Ohms	119 lbs/54 kg

SPECIFICATIONS

Ampere Hour Capacity to 1.75 Volts per Cell @77°F (25°C)
Discharge in Hrs.

Model	1	2	3	4	5	6	7	8	10	12	20	24
TEL12-170F/FG	113	129	141	148	155	160	164	169	174	178	186	187

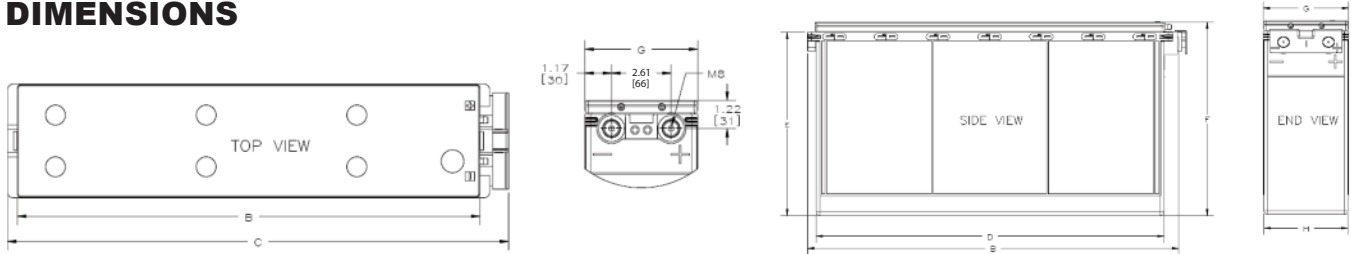
You may also access the product ratings by logging onto the C&D Battery Sizing program at www.cdstandbypower.net

Ampere Hour Capacity to 1.80 Volts per Cell @68°F (20°C)
Discharge in Hrs.

Model	1	2	3	4	5	6	7	8	10	12	20	24
TEL12-170F/FG	104	121	131	138	143	148	153	158	164	166	172	175

You may also access the product ratings by logging onto the C&D Battery Sizing program at www.cdstandbypower.net

DIMENSIONS



MODEL	A		B		C		D		E		F		G		H	
	in	mm	in	mm	in	mm	in	mm	in	mm	in	mm	in	mm	in	mm
TEL12-170F	20.3	516	21.5	546	22.0	559	20.1	512	10.7	272	11.0	277	4.9	126	4.8	123
TEL12-170FG	20.3	516	21.5	546	22.0	559	20.1	512	10.7	272	11.2	283	4.9	126	4.8	123

* All dimensions in inches and (millimeters). All dimensions are for reference only. Contact a C&D Representative for complete dimensional information.

Operating Temperature Range with temperature compensation	Discharge: -40°F (-40°C) to +160°F (71°C) Charge: -10°F (-23°C) to +140°F (60°C)
Nominal Operating Temperature Range	+68°F (20°C) to +80°F (27°C)
Recommended Maximum Charging Current Limit	C ₂₀ /5 Amperes (37.2A)
Float Charging Voltage	13.5 to 13.8 VDC average per 12V unit
Maximum AC Ripple (Charger)	0.5% RMS or 1.5% P-P of float charge voltage recommended for best results. Max voltage allowed = 1.4% RMS (4% P-P) Max current allowed = C ₂₀ /20
Self Discharge	Battery can be stored up to 6 months at 77°F (25°C) before a freshening charge is required. Batteries stored at temperatures greater than 77°F (25°C) will require recharge sooner than batteries stored at lower temperatures. See C&D bulletin 41-7272, Self-Discharge and Inventory Control for details.
Equalize charge and cycle service voltage	14.40 to 14.80 VDC average per 12V unit @ 77°F (25°C)
Terminal: Inserted - Inter-unit connector provided	Threaded copper alloy insert terminal to accept M8 bolt
Terminal Hardware Initial Torque:	160 in.-lbs. (18 N-m)
Telcordia Part Numbers	Battery Part Number TEL12-170F/FG CLEI Code Pending CPR Pending

C&D TECHNOLOGIES, INC.

1400 Union Meeting Road
P.O. Box 3053 • Blue Bell, PA 19422-0858
(215) 619-2700 • Fax (215) 619-7899 • (800) 543-8630
customersvc@cdtechno.com
www.cdtechno.com

Dynasty House Premier Way
Abbey Park Industrial Estate
Hampshire Romsey SO51 9AQ
United Kingdom
+44 (1794) 518173

Any data, descriptions or specifications presented herein are subject to revision by C&D Technologies, Inc. without notice. While such information is believed to be accurate as indicated herein, C&D Technologies, Inc. makes no warranty and hereby disclaims all warranties, express or implied, with regard to the accuracy or completeness of such information. Further, because the product(s) featured herein may be used under conditions beyond its control, C&D Technologies, Inc. hereby disclaims all warranties, either express or implied, concerning the fitness or suitability of such product(s) for any particular use or in any specific application or arising from any course of dealing or usage of trade. The user is solely responsible for determining the suitability of the product(s) featured herein for user's intended purpose and in user's specific application.

Copyright 2012 C&D TECHNOLOGIES, INC. Printed in U.S.A. 12-1075 0512/CD