



MCTII

STANDBY BATTERIES FOR LARGE POWER APPLICATIONS

3000 AND 4000 AMPERE-HOURS



Every cell
100%
capacity tested

FEATURES AND BENEFITS

- Optimized for today's Telecom applications
- True 4000 Amp-hours capacity
- NEBS level 3 tested and certified
- Transparent container allows visual inspection of plates
- Container wall stiffening rim to reinforce jar integrity
- Container support cradle adds durability, restrains bulge at elevated temperatures,
- enhances seismic performance, and functions as cell spacer
- Flame-retardant covers enhance battery plant safety
- Soft rubber post seal absorbs shock and vibration
- Long life positive plates cast with proprietary vacuum assist bottom pour process
- CPR Number 134840 (MCTII 4000) and 135911 (MCTII 3000)

SPECIFICATIONS

Plates	Height	Width	Thickness
Positive	18.75 in (476 mm)	12.80 in (325 mm)	.308 in (7.82 mm)
Negative	18.75 in (476 mm)	12.80 in (325 mm)	.190 in (2.83 mm)
Recommended Float Voltage	2.21-2.22 @ 1.215 specific gravity; 2.25-2.26 @ 1.250 specific gravity		
Electrolyte Height Above Plates	3.55 in (90 mm)		
Sediment Space	1.25 in (32 mm)		
Electrolyte at 77F (25C)	Sulfuric Acid, 1.215 specific gravity nominal (Optional 1.250)		
Container Choices (Transparent)	<ul style="list-style-type: none"> • Thermoplastic (SAN) • High-impact, flame-retardant thermoplastic (PVC) Flammability ratings: UL94 V-0; LOI > 33 • High-impact, flame-retardant thermoplastic (polycarbonate) 		
Container Support Cradle*	High-impact, flame-retardant thermoplastic. Flammability rating: UL94 V-0; LOI > 28; ASTM D-635 self-extinguishing (*cradle provided as standard with SAN and PVC jars)		
Cover	High-impact, flame-retardant thermoplastic (PVC), with tongue-and-groove seal. Flammability ratings: UL94 V-0; LOI > 33; ASTM D-635 self-extinguishing		
Separator	Microporous rubber material		
Retainer	Fibrous glass mat		
Safety Vent System	Flame arrester type		
Terminals	Four 1.375 in (35 mm) square posts per cell		
Electrolyte Withdrawal Tubes	Two per cell		
Intercell Connectors	Lead-plated copper (Stainless steel hardware)		

CELL SPECIFICATIONS

Type of cell	Cells per unit	Plates per cell	Overall dimensions			Approx. wt. lbs (kgs)		Gal. (Liters)	Electrolyte	Internal
			L in (mm)	W in (mm)	H in (mm)	Net filled	Dom. packed	Electrolyte per cell	Weight per Cell*	Resistance** (ohms)
MCTII -3000	1	31	15.19 (386)	17.32 (440)	28.9 (735)	635 (289)	653 (296)	19 (72)	190 (87)	.000100
MCTII -4000	1	41	15.19 (386)	17.32 (440)	28.9 (735)	697 (317)	715 (325)	15 (57)	150 (69)	.000075

*Electrolyte weighs approximately 10 lbs per gallon (1.210 kgs per liter).

**Includes connector.

CELL RATINGS

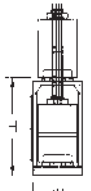
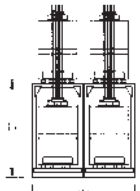
Nominal Rates at 77F (25C) (includes connector voltage drop) • Amperes

Final Volts	Model	8 Hr	5 Hr	4 Hr	3 Hr	2 Hr	1 Hr	30 Min
1.90	MCTII-3000	277	374	425	493	584	704	774
	MCTII-4000	369	498	566	657	779	939	1032
1.88	MCTII-3000	297	403	458	532	636	796	909
	MCTII-4000	396	537	611	709	849	1061	1212
1.86	MCTII-3000	313	428	490	573	695	891	1040
	MCTII-4000	418	571	653	765	927	1188	1387
1.85	MCTII-3000	320	437	500	588	719	940	1112
	MCTII-4000	427	583	667	784	959	1253	1483
1.84	MCTII-3000	326	448	514	605	742	977	1168
	MCTII-4000	435	597	685	807	990	1302	1558
1.81	MCTII-3000	342	474	547	648	804	1084	1336
	MCTII-4000	456	632	729	865	1072	1446	1781
1.80	MCTII-3000	346	481	556	662	829	1139	1426
	MCTII-4000	461	641	741	883	1105	1519	1901
1.78	MCTII-3000	354	490	566	675	851	1203	1542
	MCTII-4000	472	653	755	900	1135	1604	2056
1.75	MCTII-3000	375	518	599	715	905	1312	1766
	MCTII-4000	500	691	798	953	1207	1749	2355

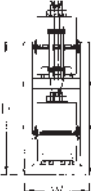
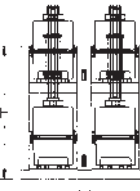
Notes: 1. All rates conform to IEEE-450-2002 2. For all rates less than 8 hours, 99% capacity or greater can be expected on a string basis upon delivery 3. For the 8 hour rate, 90% capacity or greater can be expected on a string basis upon delivery

RACK SPECIFICATIONS

STANDARD (NON-SEISMIC) (UBC 0)

Number of Cells	Two tier / One row Model RD-2083-(L) Width: 22.50 in (572 mm) Height: 43.50 in (1105 mm)			Two tier / Two row Model RD-2059-(L) Width: 45.38 in (1152 mm) Height: 43.50 in (1105 mm)		
	Length - (L)	Weight		Length - (L)	Weight	
	FT (mm)	LBS (kgs)		FT (mm)	LBS (kgs)	
12	8 (2438)	350 (159)		—	—	
24	16 (4877)	640 (290)		8 (2438)	600 (272)	
48	—	—		16 (4877)	1200 (544)	

SEISMIC BELLCORE ZONE 2 (UBC 3&4)

Number of Cells	Two tier / One row Model RD-2083-(L)-BC2 Width: 28.50 in (724 mm) Height: 59.50 in (1511 mm)			Two tier / Two row Model RD-2059-(L)-BC2 Width: 55.75 in (1416 mm) Height: 59.50 in (1511 mm)		
	Length - (L)	Weight		Length - (L)	Weight	
	FT (mm)	LBS (kgs)		FT (mm)	LBS (kgs)	
12	8 (2438)	575 (260)		—	—	
24	16 (4877)	1150 (521)		8 (2438)	1025 (464)	
48	—	—		16 (4877)	2000 (906)	

Notes:

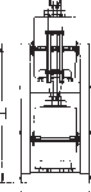
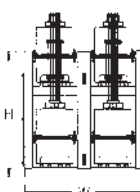
1. For rack lengths not shown contact C&D engineering

2. Rack width does not include thickness of crossbracing. Increase width by 0.5 inches (12.7 mm) when this dimension is critical.

3. Typical cell installation on racks is with plates parallel to rack rails.

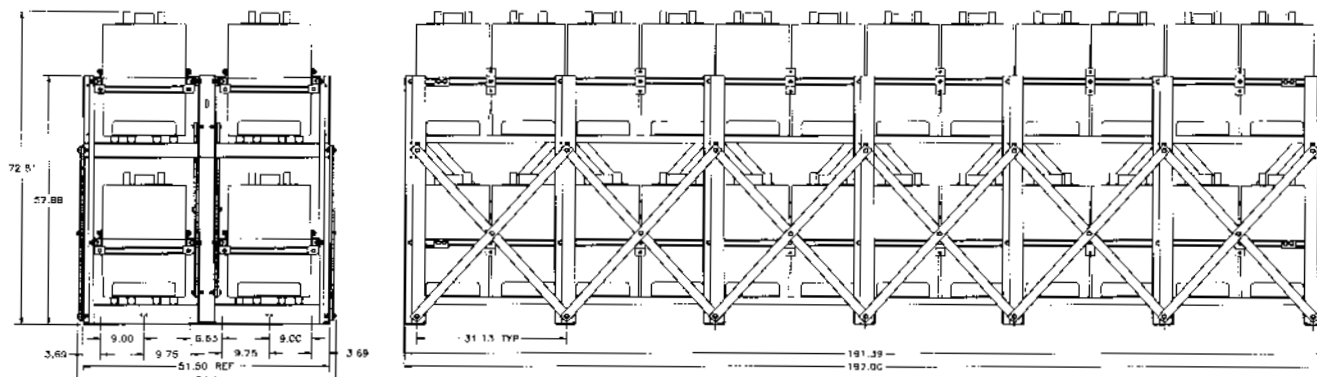
4. For other cell configurations and rack types, contact C&D Engineering.

SEISMIC BELLCORE ZONE 4 (UBC 4+)

Number of Cells	Two tier / One row Model RD-2083-(L)-BC4 Width: 28.50 in (724 mm) Height: 59.50 in (1511 mm)			Two tier / Two row Model RD-2059-(L)-BC4 Width: 55.75 in (1416 mm) Height: 59.50 in (1511 mm)		
	Length - (L)	Weight		Length - (L)	Weight	
	FT (mm)	LBS (kgs)		FT (mm)	LBS (kgs)	
12	8 (2438)	575 (260)		—	—	
24	16 (4877)	1165 (528)		8 (2438)	1100 (498)	
48	—	—		16 (4877)	2200 (997)	

"NEBS CERTIFIED" MCT II RACKS

		Rack dimensions (inches)			Maximum rack dim inc. side/end rails and bolts
		Length	Width	Height	Height to the top of the battery post
2T1R for 24 cells: Standard Rotated	RD04258-16N4	192.00"	25.88"	58.13"	192"L x 27.5"D x 73.06"H 218.1"L x 25.7"D x 73.06"H
	RD04259-18N4	216.00"	24.13"	58.13"	
2T2R for 24 cells: Standard Rotated	RD04262-08N4	96.14"	51.50"	57.88"	98.21"L x 54.1"D x 72.81"H 111.20"L x 50.6"D x 72.81"H
	RD04263-09N4	108.50"	48.00"	57.88"	
2T2R for 48 cells: Standard Rotated	RD04262-16N4	191.39"	51.50"	57.88"	192"L x 54.1"D x 72.81"H 218.2"L x 50.6"D x 72.81"H
	RD04263-18N4	216.5"	48.00"	57.88"	



Shown: RD04262-16N4, 2T2R 16ft long MCT II-4000 rack with 48 cells
For NEBS zone 2 racks, use suffix "-N2" in place of "-N4". Dimensionally, they are the same.

HIGH QUALITY BATTERY RACKS AND SPILL CONTAINMENT SYSTEMS ARE C&D TECHNOLOGIES' SPECIALTIES

C&D TECHNOLOGIES offers quality racks to support its highly regarded **MCT II** product line. The racks offer a range of quality features while maintaining a competitive price structure.

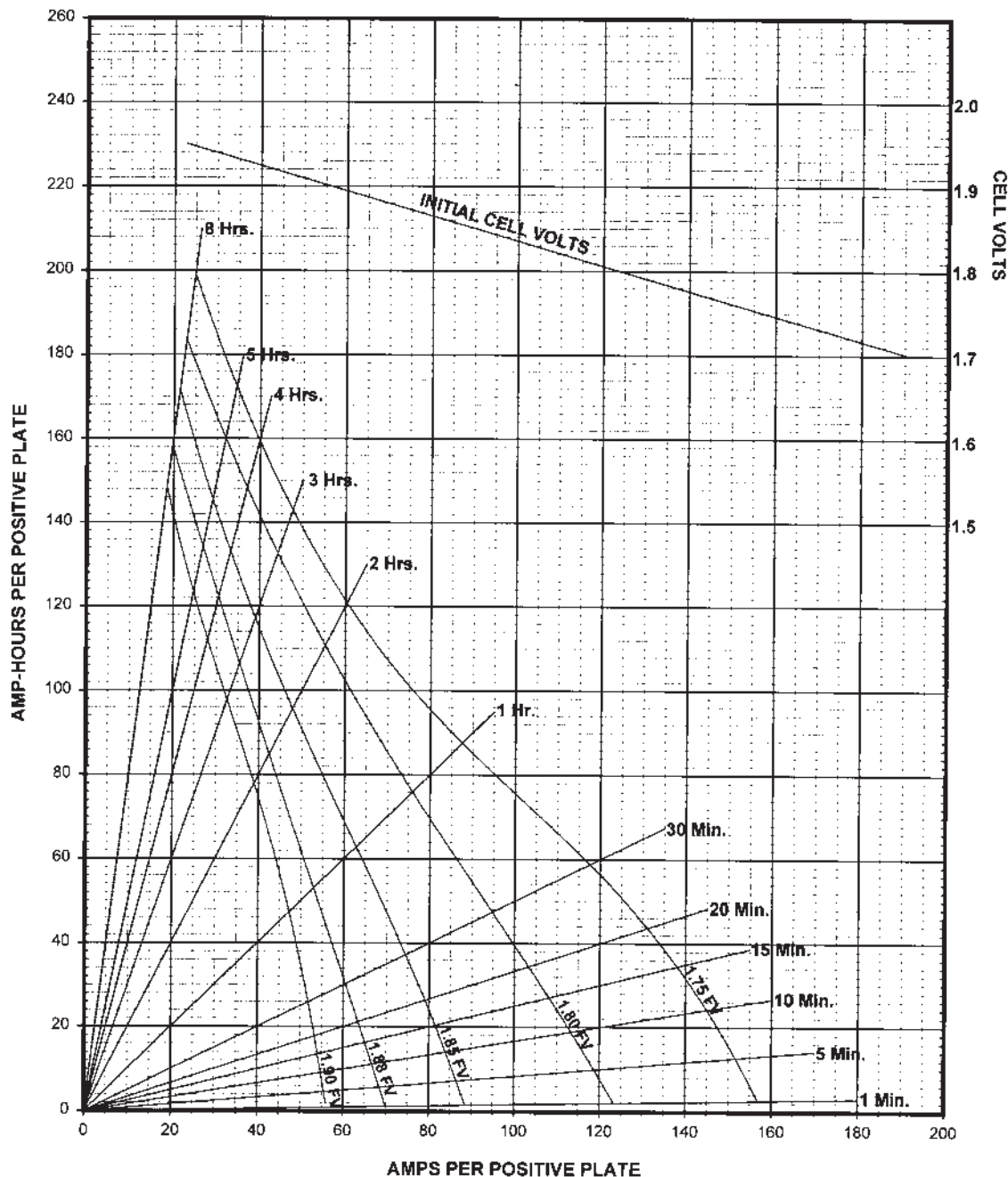
- Epoxy Coated — 4 Rail Design
- Rugged "C-Channel" Frame Design
- Welded Steel Frames with an Acid Resistant, Electro-statically Applied Epoxy Powder Coat, ANSI 61 Gray
- Rails Accommodate Clip Nuts for Bolt-on Accessories
- Simplified Installation with Accessible Anchor Bolt Locations
- Racks are Shipped Unassembled
- Available for all Seismic Zones

C&D TECHNOLOGIES offers spill containment systems designed to meet and, in many cases, exceed all applicable Federal and State regulations by providing you with reliable, solid performance for hazardous material spills.

- Assembled with Flanges out or with Flanges in to Maximize Aisle Space
- PVC Coated Metal Construction
- Modular Design for Easy Installation and Maintenance
- Reusable in the Event of Future Expansion
- Complete System with Neutralizing and Absorbing Pillows



CELL MODELMCT 3000 OR 4000
NUMBER OF POSITIVE PLATES.....15 OR 20
ELECTROLYTE SPECIFIC GRAVITY.....1.215 + .005
TEMPERATURE.....77°F
TEST PROCEDURE.....IEEE 450-2002
DISCHARGE CHARACTERISTIC CURVE.....D-644



C&D TECHNOLOGIES, INC.

STANDBY POWER DIVISION

1400 Union Meeting Road
P.O. Box 3053 • Blue Bell, PA 19422-0858
(215) 619-2700 • Fax (215) 619-7899 • (800) 543-8630
customersvc@cdtechno.com • www.cdtechno.com

Any data, descriptions or specifications presented herein are subject to revision by C&D Technologies, Inc. without notice. While such information is believed to be accurate as indicated herein, C&D Technologies, Inc. makes no warranty and hereby disclaims all warranties, express or implied, with regard to the accuracy or completeness of such information. Further, because the product(s) featured herein may be used under conditions beyond its control, C&D Technologies, Inc. hereby disclaims all warranties, either express or implied, concerning the fitness or suitability of such product(s) for any particular use or in any specific application or arising from any course of dealing or usage of trade. The user is solely responsible for determining the suitability of the product(s) featured herein for user's intended purpose and in user's specific application.

Copyright 2005 C&D TECHNOLOGIES, INC. Printed in U.S.A. 12-336 5M/805/WLG/7